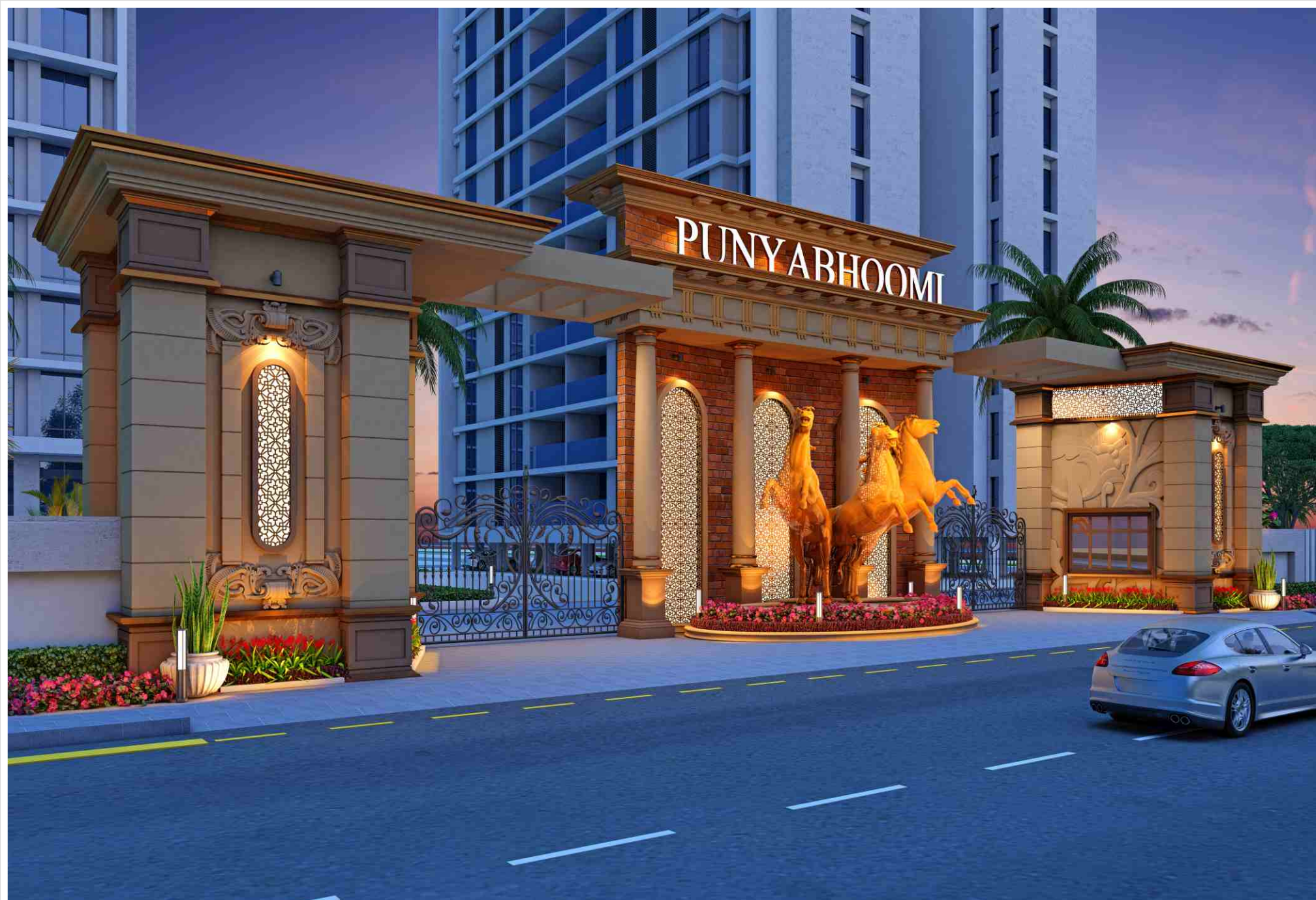
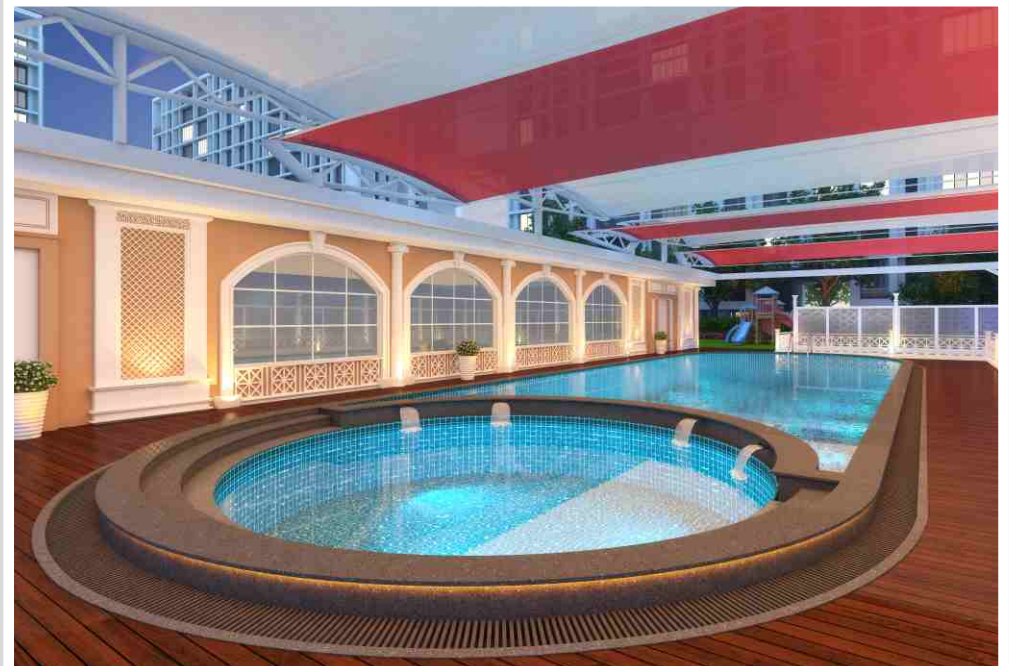




PUNYABH●OMI





4-BHK

TYPICAL FLOOR

CARPET AREA - 1760 SQ.FT.
SALEABLE AREA - 3034 SQ.FT.

ARYA - DEVYA

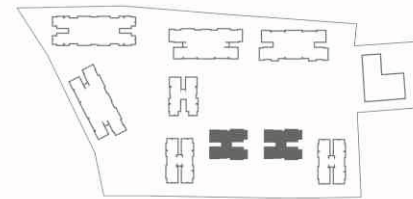


4-BHK

TYPICAL FLOOR

CARPET AREA - 1595 SQ.FT.
SALEABLE AREA - 2750 SQ.FT.

BHAVYA - CHAITANYA



B,C - Unit Plan

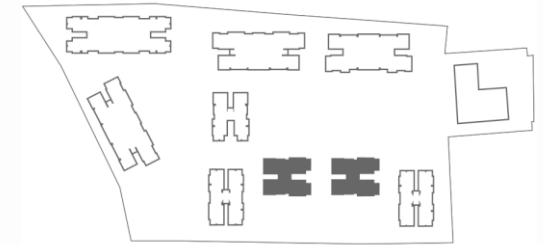


3-BHK

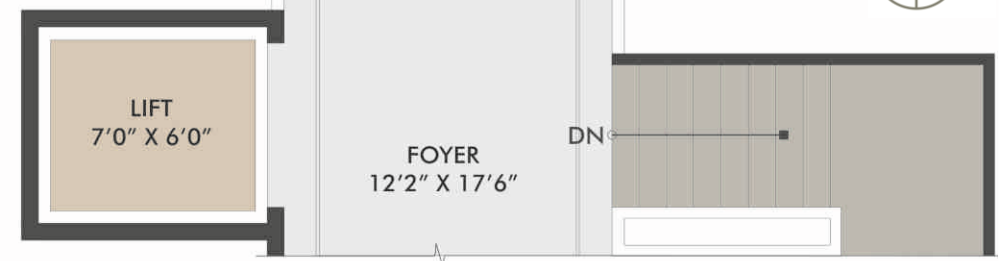
TYPICAL FLOOR

CARPET AREA - 1310 SQ.FT.
SALEABLE AREA - 2259 SQ.FT.

BHAVYA - CHAITANYA



B,C - Unit Plan



4-BHK

TYPICAL FLOOR

CARPET AREA - 1595 SQ.FT.
SALEABLE AREA - 2750 SQ.FT.

EKLAVYA

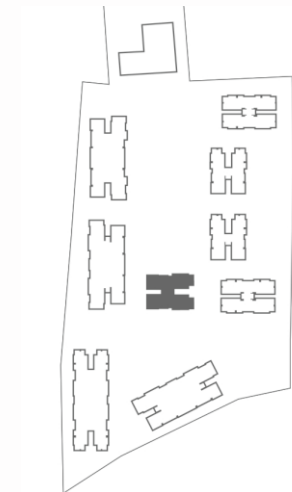


3-BHK

TYPICAL FLOOR

CARPET AREA - 1310 SQ.FT.
SALEABLE AREA - 2259 SQ.FT.

EKLAVYA



E - Unit Plan



3-BHK

TYPICAL FLOOR

CARPET AREA - 1350 SQ.FT.
SALEABLE AREA - 2328 SQ.FT.

FORAMYA

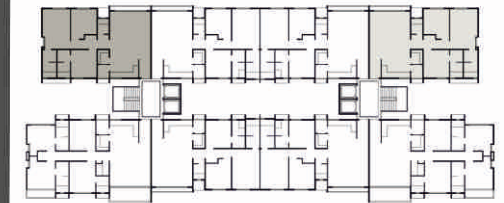
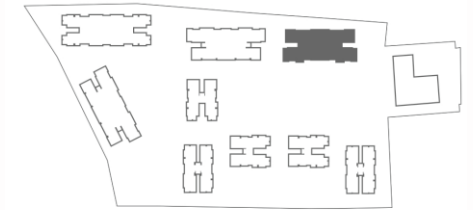


3-BHK

TYPICAL FLOOR

CARPET AREA - 1345 SQ.FT.
SALEABLE AREA - 2319 SQ.FT.

FORAMYA



F - Unit Plan



4-BHK

TYPICAL FLOOR

CARPET AREA - 1680 SQ.FT.
SALEABLE AREA - 2897 SQ.FT.

FORAMYA



4-BHK

TYPICAL FLOOR

CARPET AREA - 1680 SQ.FT.
SALEABLE AREA - 2897 SQ.FT.

GOKULYA

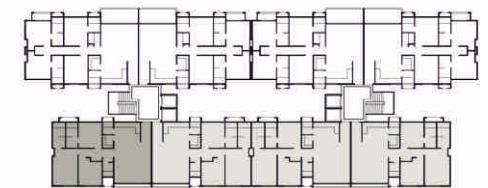
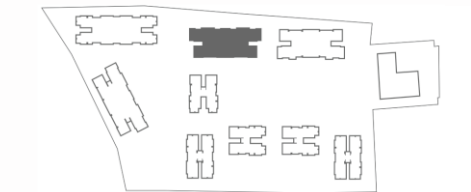


3-BHK

TYPICAL FLOOR

CARPET AREA - 1345 SQ.FT.
SALEABLE AREA - 2319 SQ.FT.

GOKULYA



G - Unit Plan



3½-BHK

TYPICAL FLOOR

CARPET AREA - 1640 SQ.FT.
SALEABLE AREA - 2828 SQ.FT.

HARIDAYA



3½-BHK TYPICAL FLOOR

CARPET AREA - 1600 SQ.FT.
SALEABLE AREA - 2759 SQ.FT.

HARIDAYA



EXTERNAL & INTERNAL SPECIFICATION

CONSTRUCTION

Enhanced structure for safety against earthquakes. The RCC Framed structure made up of ISI marked steel rods and fine quality of both inside and outside faced plaster give a robust strength to your dream abode.

EXTERNAL COLOUR

Double coat water repellent colour along with weather textured paint maintain work like anti-aging therapy and maintain the outside beauty of your home for years.

WATER SUPPLY

"Shortage of water" will be an strange phrase for you as from now onwards, it will be a 24x7 water supply for you, Backed by both municipal and private supply there is no dearth of water in the premises. Besides, "Rain Water Harvesting" lead us towards on environmental friendly human settlement.

SUPPLY OF ELECTRICITY

Mainly relied on the Gujarat Electricity Board, there is substantial back-up of heavy generators to support the apartments and common areas with unrestrained supply round the clock.

ENTRANCE LOUNGE & FOYER

Well organized luxurious foyer complemented with name plates, reading desk and multi charging facility for your phones and gadgets. Sophisticatedly designed reception area and waiting lounge redefine comfort & aesthetics. In addition a dedicated area for the physically challenged people give them a soothing experience.

FLOORS, STAIRCASE AND TERRACE

Matt finished stoned floors in combination of glossy granite tiles give a soft and sensational touch to the delicate skin of your feet and the decorative ceiling brings spark into your eyes. Make the terrace a hangout zone in the evening stepping over the china mosaic.

ELEVATOR

Move up and down without any fear as we equipped the building with the best available elevating systems in India. Moreover, safety doors work automatically in case of an emergency. All lifts in the premises are backed-up by power generators 24 hrs a day.

WINDOW GRILL

Mild Steel safety grills from inside to reinforce home security.

FIRE FIGHTING SYSTEM

We strictly comply all the fire safety norms as per national building Code (NBC) standards.

GENERAL SECURITY

The entire campus is secured for all inmates and considering the vulnerability of women, children and senior citizens the campus is under siege by fortified fencing. To keep eye on every entry and exit, alert security guards along with the CCTV Cameras protect the residents from suspicious people not only in day hours, but also in dark nights. All public area have CCTV monitoring system with 30 days recording capacity.

ADVANCED COMMUNICATION FACILITIES

Whole campus, including flats and foyer are connected with intercom. Wireless broadband internet gives you fast and speedy online connectivity . In addition, audio-video door phones enhance your security and convenience for the visitors.

PARKING

Ample parking space to accommodate two cars and one bike of every flat owner.

GREEN ENERGY

Our friendly approach towards the environment induced us to adapt solar energy to lighten the campus streets and exteriors of buildings.

FLOORS

Living/Dining area floor covered with (1x1 mt.) white vitrified tiles. Master bedrooms with high quality wooden floors and the remaining area with premium quality granite. Antiskid tiles in balcony and kotastone flooring in bath area enhance luxury as well as comfort.

DOORS AND WINDOWS

All doors and frames made up of Sal wood or its equivalent and toilet doors are of granite frame. All windows are of hi-grade anodized or powdered coated aluminium. Kitchen and toilet windows are designed to install exhaust fans. Door shutters are of pre-pressed and pre-tested quality and these are all branded.

KITCHEN

All kitchens are equipped with water filter system, drain boards and high quality sinks. Kitchen slabs are made of elegant and sturdy granite. The dado will feature designer kitchen tiles.

WALLS & CEILING

Internal Walls of the hall, dining area and bed rooms will be smoothen by two coats of Birla putty.

AIR CONDITIONING

A separate split AC for each bedroom along with air conditioning for living room area. Only brands like Mitsubishi and Hitachi have been chosen to give you a cool and comfortable experience. The compressor unit will be in your reach for the sake of convenience.

LAUNDRY ARE

Safe and dedicated space for washing and drying area of clothes. To meet the washing needs, this space has appropriate plumbing points and electrical sockets to connect washing machines and gas geysers.

SANITARY WARES AND FITTINGS

All toilets are equipped with designer wall hung W.C. and uniquely designed counter basin of Villeroy & Boch, Toto, Duravit or of an equivalent brand. All toilets and kitchens are equipped with flush valve, combination of mixer & diverter with overhead shower, sink taps and movable kitchen taps. All fittings will be CP finished of brands like Jaguar, Kohler, Grohe, Hans or of the same repute.

TOILET

Perfectly designed toilet to separate dry and wet areas and the dado will display designer tiles. Master bedroom toilets are attached with dressing areas and closets.

ELECTRIFICATION

Only big multinational brand like Siemens will be used for wires, switches, DB, MCB and other electrification purposes. Electric earth protection and heavy load GEB meter connection will be provided by the builders end.

A PROJECT BY



BOOKING CONTACT : 09824120022

SITE : NR. BHAGWAN MAHAVIR COLLEGE, SECOND VIP ROAD, VESU SURAT - 395017

e : punyabhoomi.vesu@gmail.com | w : www.punyabhoomi.in